

# BJ350

# WORK SUPPORTS



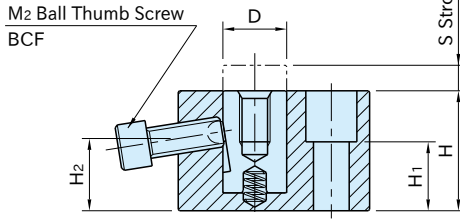
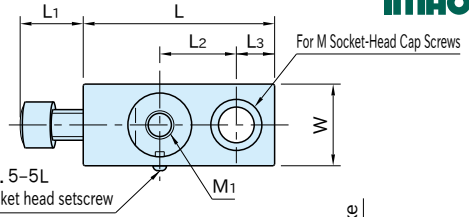
**BJ350**

(Ball-Thumb-Screw Style)



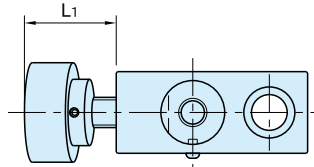
**BJ350-C**

(Knurled-Knob Style)

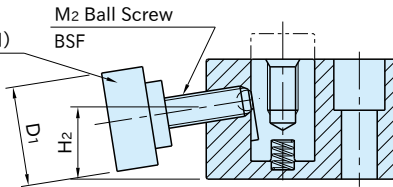


**BJ350**

(Ball-Thumb-Screw Style)



Knurled Knob  
(pinned and glued)  
BJ750-N



**BJ350-C**

(Knurled-Knob Style)

| Body                             | Piston  |
|----------------------------------|---|
| S45C steel<br>Black oxide finish | SK95 steel<br>Quenched and tempered<br>Black oxide finish |

| Size                 | H  | S  | M <sub>1</sub>    | D  | L  | W  | M   | L <sub>2</sub> | L <sub>3</sub> | H <sub>1</sub> | H <sub>2</sub> |
|----------------------|----|----|-------------------|----|----|----|-----|----------------|----------------|----------------|----------------|
| <b>BJ350</b> 06001   | 29 | 6  | M 6x1 Depth 10    | 12 | 38 | 19 | M 6 | 15             | 8              | 15             | 17.6           |
| <b>BJ350</b> 08001   | 37 | 10 | M 8x1.25 Depth 15 | 16 | 50 | 22 | M 8 | 20             | 10             | 20             | 21.6           |
| <b>BJ350-C</b> 10001 | 42 |    | M10x1.5 Depth 15  | 19 | 65 | 25 | M10 | 25             | 15             |                | 24.6           |
| <b>BJ350-C</b> 12001 | 47 |    | M12x1.75 Depth 20 | 25 | 75 | 32 | M12 | 30             |                | 27             | 28.3           |

**BJ350** (Ball-Thumb-Screw Style)

| Part Number        | L <sub>1</sub> | M <sub>2</sub> | Screw Torque(N·m) | Support Capacity(kN) | Piston Spring Force(N) | Weight (g) |
|--------------------|----------------|----------------|-------------------|----------------------|------------------------|------------|
| <b>BJ350-06001</b> | 12             | M 6×1 -16L     | 7.5               | 4                    | 0~ 6                   | 150        |
| <b>BJ350-08001</b> | 15             | M 8×1.25-20L   | 14                | 6                    | 0~ 7                   | 285        |
| <b>BJ350-10001</b> | 18.5           | M10×1.5 -25L   | 18                | 7.5                  | 1~11                   | 470        |
| <b>BJ350-12001</b> | 23             | M12×1.75-30L   | 22                | 9                    |                        | 790        |

**BJ350-C** (Knurled-Knob Style)

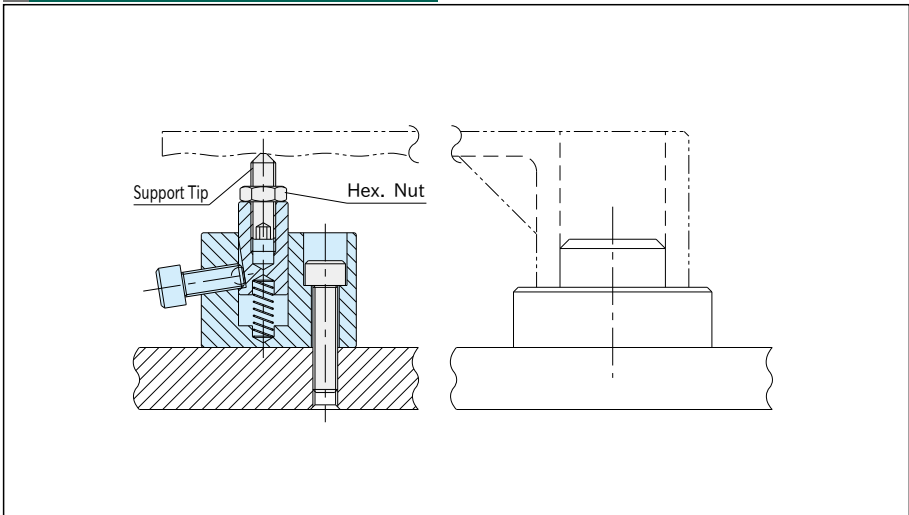
| Part Number         | L <sub>1</sub> | D <sub>1</sub> | M <sub>2</sub> | Screw Torque(N·m) | Support Capacity(kN) | Piston Spring Force(N) | Weight (g) |
|---------------------|----------------|----------------|----------------|-------------------|----------------------|------------------------|------------|
| <b>BJ350-06001C</b> | 20.7           | 24             | M 6×1          | 1                 | 0.6                  | 0~ 6                   | 180        |
| <b>BJ350-08001C</b> | 23.6           | 30             | M 8×1.25       | 1.2               | 0.7                  | 0~ 7                   | 340        |
| <b>BJ350-10001C</b> | 26.2           | 36             | M10×1.5        | 1.5               |                      | 1~11                   | 550        |
| <b>BJ350-12001C</b> | 31.3           | 40             | M12×1.75       | 2                 | 0.8                  |                        | 910        |

**Feature**

The positive locking mechanism allows the ball-thumb-screw style to offer high support capacities.

**Note**

When you attach a support tip to the tapped hole through the shaft, tighten the shaft and fix it to prevent damage.

**How To Use**

Ideal for preventing the workpiece from chattering and deflecting.

**Reference**

**BJ650** REMOTE-CONTROL UNITS